

# BORRINI II

ELITE SERIES

2-STORY

COMERIO  
ESTD 2005  
*Homes*



## MAIN FLOOR



## SECOND FLOOR



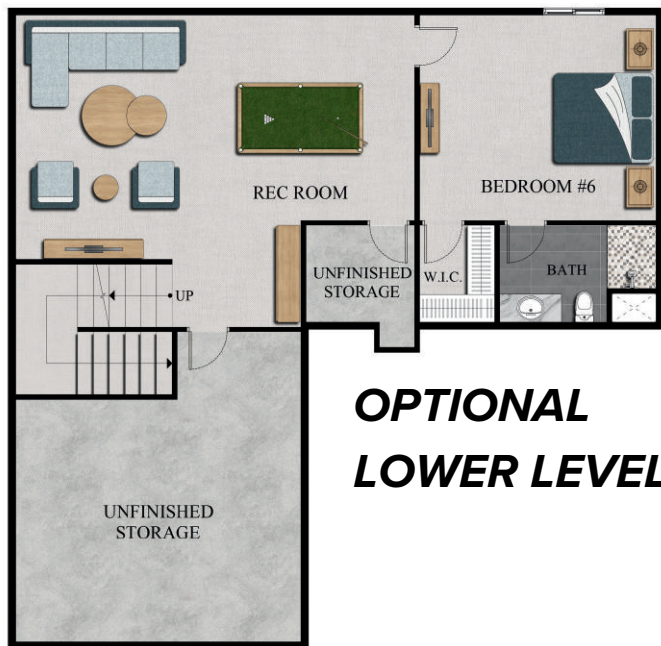
## PROPERTY FEATURES

- 5 - 6 BEDROOMS
- 4 - 5 BATHROOMS
- 3 CAR GARAGE
- 2,704 - 3,514 +/- SQFT.
- 52' x 53' 1"



# ***BORRINI II***

## **OPTIONAL ELEVATIONS**



**OPTIONAL  
LOWER LEVEL**